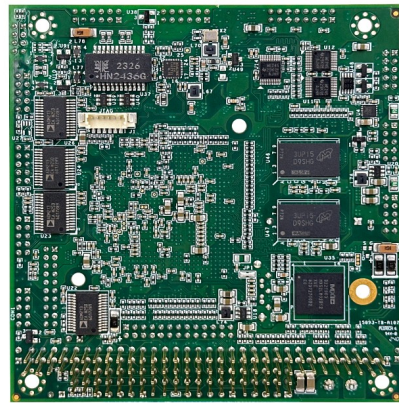
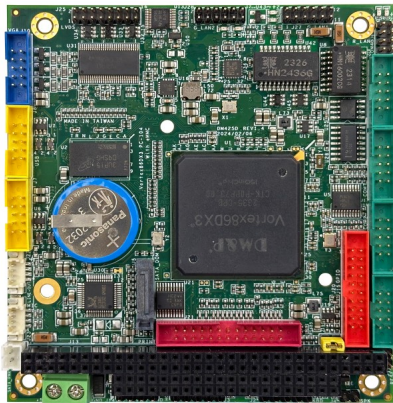


VDX3-6757



Specifications

CPU	DM&P SoC Vortex86DX3 1GHz, L1: 32K I-Cache, 32K D-Cache, L2 Cache: 512KB			
RAM	512MB/1GB/2GB DDR3 Onboard			
BIOS	AMI BIOS			
Bus	PC/104 Standard Compliant			
Display	Integrated 2D VGA chip with Dual Display Support (VGA + LVDS) VGA: Maximum resolution up to 1920 x 1080 @ 60Hz LVDS: Maximum resolution up to 1280 x 1024 @ 60Hz, single channel 24-bit LVDS			
LAN	Integrated 10/100Mbps Ethernet x1	RTL8111H GbE x2		
Audio	ALC888S			
Disk Support	SATA DOM	eMMC(Optional)		
I/O Interface	RS232 x4(1x RS232/485) 16-bit GPIO x1	USB (ver. 2.0) x4 HD Audio	Parallel x1	
Connectors	2.54mm 4-pin pin header for DC output x1 2.54mm 4-pin pin header for Keyboard x1 2.0mm 20-pin pin header for LVDS x1 2.0mm 8-pin pin header for Ethernet x1 2.0mm 12-pin pin header for GbE x2 7-pin SATA connector for SATA DOM x1	2.54mm 2-pin pin header for Reset x1 2.54mm 4-pin pin header for Mouse x1 2.0mm 26-pin box header for Parallel x1 2.0mm 10-pin box header for USB x2 2-pin box header for DC 5V output x1	2.54mm 104-pin PC/104 connector x1 2.0mm 20-pin box header for 16-bit GPIO x1 2.0mm 10-pin box header for RS232 x4 1.25mm 4-pin wafer connector for Line-out/MIC-in x2 15-pin D-Sub female connector for VGA x1	
Power Requirement	DC+5V @ 1300mA (Typical)			
Operating Temperature	-20°C - +70°C (Single Core) -10°C - +60°C (Dual Core)	-40°C - +85°C (Optional for Single Core) -20°C - +70°C(Optional for Dual Core)		
Dimension	90 x 96mm			
Weight	80g			
O/S Support	Windows 7 Windows Embedded 2009 QNX	Windows Embedded Standard 7 POS Ready (WePOS) VxWorks	Windows Embedded Compact 7 Linux Free BSD	Windows XP Professional DOS

Ordering Information

PART NO.	CPU	DRAM (DDR3)	Storage	Display	LAN	USB (ver. 2.0)	RS232	16-bit GPIO	Parallel	Audio
VDX3-6757-1G	1GHz	1GB	SATA eMMC(Optional)	VGA LVDS	3	4	4	1	1	Line-out/MIC-in
VDX3-6757-2G	1GHz	2GB	SATA eMMC(Optional)	VGA LVDS	3	4	4	1	1	Line-out/MIC-in
VDX3-6757S	800 MHz	512MB	SATA eMMC(Optional)	VGA LVDS	3	4	4	1	1	Not Supported

CABLE-SET-6757 Cable set for VDX3-6757

CABLE-SET-6757-S Cable set for VDX3-6757S