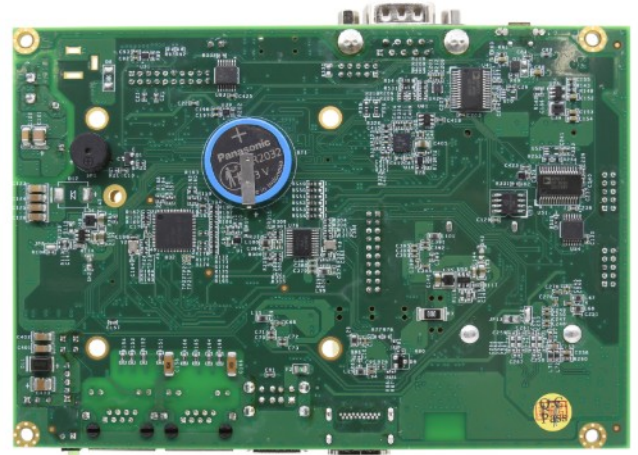
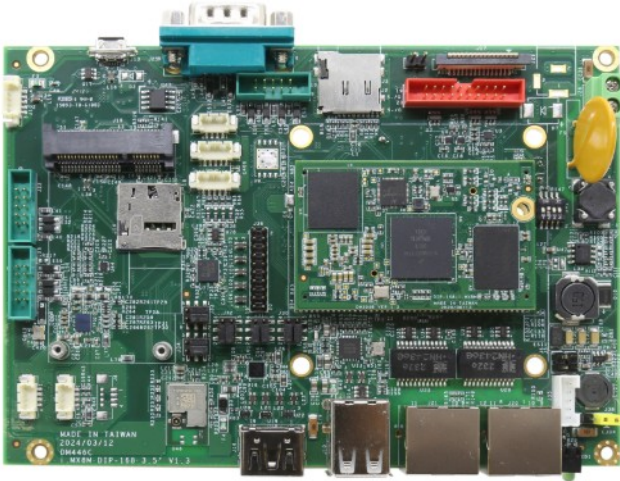


NX8MM-35



Specifications

CPU	NXP i.MX8M Mini Quad, 4 x Cortex-A53 1.6GHz / 1.8GHz		
RAM	2/4GB LPDDR4 Onboard		
Display	GPU: GCNanoUltra for 3D acceleration/GC320 for 2D acceleration. HDMI: Maximum resolution up to 1920 x 1080 @ 60Hz LVDS: 24-bit maximum resolution up to 1920 x 1080 @ 60Hz (Chosen between HDMI)		
LAN	GbEx2	GbE x1(Optional with MiniPCIe)	
Disk Support	On board eMMC 16~64GB (MLC)	Micro SD card	
I/O Interface	USB (ver. 2.0) x4 (1 Micro USB for OTG)	Up to COM x4 RS232/485 x2 RS232 x1 TX/RX x1	i2c x1
	SPI x1 (Chosen between COM)	MiniPCIe x1(Optional)	Wi-Fi&Bluetooth
	MIPI-CSI x1	15-bit GPIO x1	HD Audio
	Connectors	HDMI Connector x1 RJ45 Connector x1 or 2 micro USB x1 2.0mm 10-pin box header for COMx3 MiniPCIe slot x1 2-pin box header for DC 12~24V input x1	2.0mm 20-pin box header for LVDS Micro SD card slot 1.25mm 5-pin wafer for USB x1 1.25mm 5-pin wafer for i2c x1 2.0mm 20-pin box header for 15-bit GPIO DC-Jack for DC 5V input x1 (Optional)
Power Requirement	DC Terminal +12~24V / DC Jack +5V (Optional)		
Operating Temperature	-0°C to +70°C (1.8GHz CPU)	-20°C to +70°C (1.6GHz CPU)	-40°C to +80°C (Optional) (1.6GHz CPU)
Dimension	146 x 111 mm		
Weight	170g		
O/S Support	Yocto Linux	Android	

Ordering Information

PART NO.	CPU	DRAM (LPDDR4)	Storage	Display	GLAN	USB (ver. 2.0)	COM	MiniPCIe
NX8MM-35-42CMEBG	1.6GHz (Quad Core)	2GB	onboard eMMC 16GB Micro SD card x1	HDMI / LVDS (Jumper selectable)	1	4	4	1
NX8MM-35-42CMEBG2	1.6GHz (Quad Core)	2GB	onboard eMMC 16GB Micro SD card x1	HDMI / LVDS (Jumper selectable)	2	4	4	N/A
NX8MM-35-44EMEBCG	1.6GHz (Quad Core)	4GB	onboard eMMC 64GB Micro SD card x1	HDMI / LVDS (Jumper selectable)	1	4	4	1
NX8MM-35-44EMEBCG2	1.6GHz (Quad Core)	4GB	onboard eMMC 64GB Micro SD card x1	HDMI / LVDS (Jumper selectable)	2	4	4	N/A

